



# CRUISE OWNER ASSOCIATION

## 2026 Lady Challenge Rally

7th Feb 2026 (Approxiamtely 10.0 Nautical Miles)

### Event Instructions

#### A – Sailing Arrangements

- Each Participating boat **MUST** have at least one Lady Crew member on board to participate in this Lady Event.
  - Only lady crew(s) can take the helm of the boat during the Rally
- The scheduled time of start is 10:30 on 7<sup>th</sup> Feb 2026
  - Stop your engine and activate the RaceQs/Estela Tracking recording right before at the start line
  - If you arrive start line from the North, sail pass the start line from North to South at the start line
  - If you arrive start line from the East or South, sail round the Shek O Rock to Port and pass the start line from North to South
  - **The time record in RaceQs/eStela when you cross the start line from North to South will be your actual start time in the sailing session**
  - Start before 10:30:00 will score OCS and add 5% to Elapse Time



#### Sailing Results

- Boats' PHS Corrected time will be used as their class results in the Sailing Session - IRC boats will have IRC corrected time for reference.
- Prize will be awarded to the overall winning boat in the sailing session



#### Start line of the Sailing Session

- A Virtual Start Line at Latitude 22°14.040'N between Shek O Rock Light to Port and Hong Kong Island to starboard



#### Gate Line of the Sailing Session

- A Virtual Gate Line at Longitude 114°14.220'E between Castle Rock to Starboard and GPS Waypoint 22°10.500'N, 114°14.220'E to Port
- *This is the provision Cut Short Finish Line*



#### Finish Line of the Sailing Session

- A Virtual Finish Line at latitude 22°13.000'N in Tai Tam Bay
- Stop your "RaceQs" System after crossing the Virtual Finish Line



#### Sailing Declarations

- Use "RaceQs" Track Record
- Activate "RaceQs" System to recording your boat's track records right before crossing the start line
- Use more than 1 phone to record your track record, more phones the better
- At least 5 minutes after you finished, latest before 14:30, save & upload ALL your "RaceQs" track records to the system
- For eStela please log onto the eStela App with the provided access key and start tracking your race following the same steps as mentioned above.



# CRUISE OWNER ASSOCIATION

## 2026 Lady Challenge Rally

7th Feb 2026 (Approxiamtely 10.0 Nautical Miles)

### Event Instructions

#### B – Course, Cut-Off Provisions & Time Limits

<u>Course Marks &amp; Lines</u>		<u>Leading Boat Cut-Off Time</u>	<u>Time Limit for Getting Result</u>
<u>Start Line</u> #	<p>Shek O Rock – Port</p> <p>- A Virtual Start Line at <b>Latitude 22°14.040’N</b> between Shek O Rock Light to Port and Hong Kong Island to starboard</p> <p><u>Boats should pass the virtual start line from North to South</u></p>	All Boats start anytime during time window 10:30:00 to 11:00:00	
	Sung Kong Island - Starboard		
	Po Toi Island - Port		

Gate	Castle Rock - Starboard - <b>A Virtual Gate Line at Longitude <u>114°14.220'E</u> between Castle Rock to Starboard and GPS Waypoint <u>22°10.000'N, 114°14.220'E</u> to Port</b>	13:00 #	
Finish Line ◇	Tai Tam Bay <b>A Virtual Finish Line at Latitude <u>22°13.100'N</u></b>  <u>Boats should pass the virtual Finish Line from South to North</u>	13:30 ##	14:00 **
Remarks :	<p># <b>Activate phone App “RaceQs” to recording boat’s track record at the start line</b></p> <p># <b>Time Limit for Leading Boat is 13:00</b></p> <ul style="list-style-type: none"> <li>• If no boats passed the Gate line by 13:00, the longitude or the latitude of the last boat in the fleet will become the ultimate finish line.</li> <li>• The time record in RaceQs System of a boat passing this ultimate finish line will be used as her finish time.</li> </ul> <p>## <b>Time Limit for Leading Boat is 13:30</b></p> <ul style="list-style-type: none"> <li>• If no boats passed the finish line by 13:30, Sailing session will be cut short at Gate.</li> <li>• Boats’ times arrived Gate line will be used to calculate their position in the Sailing Session</li> </ul> <p><b>** If leading boat passed the finish line before 13:30, the time limit for a boat to get Sailing Session results is 14:00</b></p> <p>◇ <b>Stop “RaceQs” Track recording <u>AFTER</u> crossed the finish line</b></p>		



# CRUISE OWNER ASSOCIATION

## 2026 Lady Challenge Rally

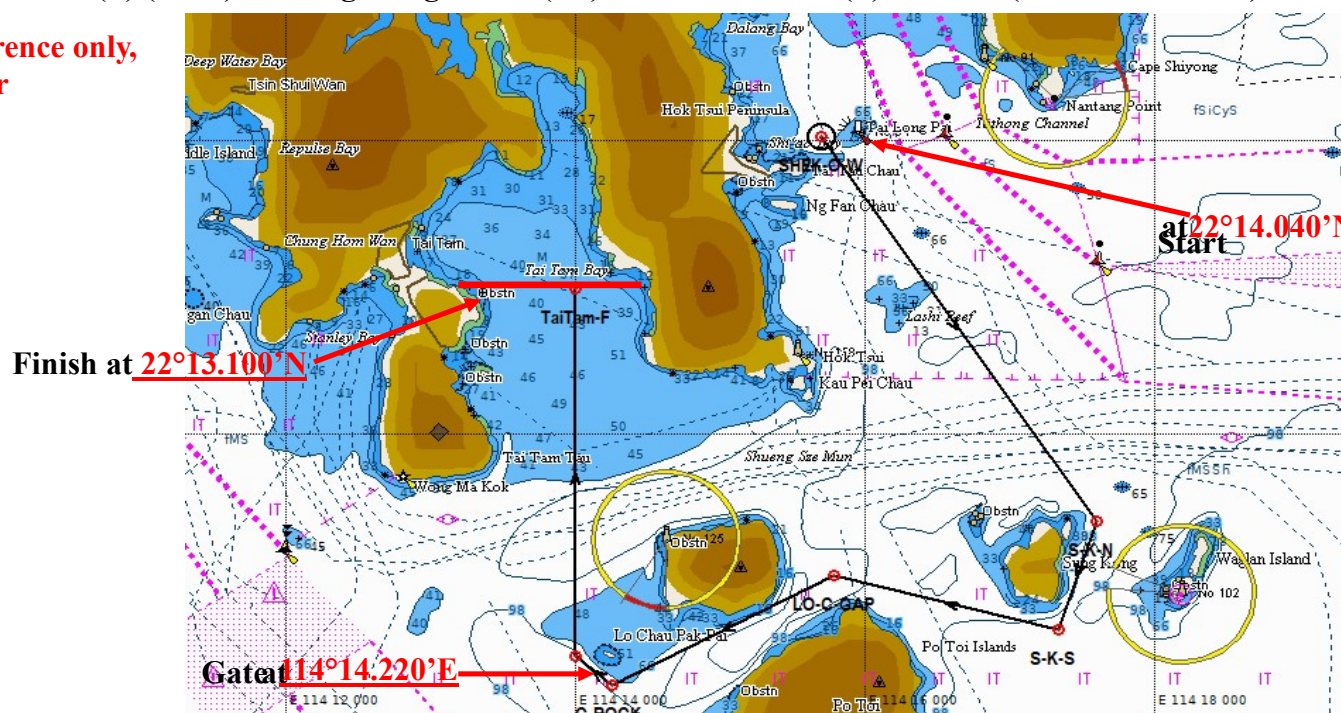
7th Feb 2026 (Approxiamtely 10.0 Nautical Miles)

### Event Instructions

#### C - Route Map For Course - 7th Feb 2026

Course : Shek O Rock (P) (Start) => Sung Kong Island (SB) => Po Toi Island (P) => Gate (Castle Rock - SB) => Tai Tam Bay (Finish)

Chart is for reference only,  
not to be used for  
navigation.





# CRUISE OWNER ASSOCIATION

## 2026 Lady Challenge Rally

7th Feb 2026 (Approxiamtely 10.0 Nautical Miles)

### Event Instructions

#### D – Sail & Sketch Love Contest

**Theme: Winter Love – The Moment We Set Sail**

**Spirit: Freely draw a painting inspired by the theme. The winner will be determined by peer vote.**

**How to Join:**

**Each boat submits 1 drawing (solo or team)**

**Materials (provided by organizers) will be available for pick-up at RHKYC CWB reception after 3/2/2026:**

#### **Drawing Rules**

**Theme: Winter Love – The Moment We Set Sail**

**Each painting must include the following:**

- 1. Sailboat symbol (any style)**
- 2. Winter love element**

**Text: Maximum 10 words**

**Style: Any (realistic, abstract, cartoon, sketch)**

#### **Submit & Vote**

- 1. After sailing, take a photo of your drawing.**
- 2. Send the image to the WhatsApp group chat with a timestamp.**
- 3. Everyone views the photos of all drawings.**
- 4. Each boat receives 1-3 votes (for your favourites, not your own), depending on the situation.**
- 5. Most votes = Winner.**
- 6. Tiebreaker: If votes are tied, the first submission (by timestamp) wins.**

**Time Limit**

**Finish and vote within 30 minutes after the race.**

**Slogan**

**Winter love sets sail — you draw, we vote!**



# CRUISE OWNER ASSOCIATION

## 2026 Lady Challenge Rally

7th Feb 2026 (Approxiamtely 10.0 Nautical Miles)

### Event Instructions

#### E – Event Results

- *A Boat's Overall Result in the event = her Sailing Result + Sail & Sketch Love Contest Result on a Low Point Scoring System.*
- *Prizes will be awarded to the Sailing, Sail & Sketch Love Contest & Overall winners*
- *One Prize for the Family Class (Overall Results) & One Prize for PHS Elapsed time Line Honor in the sailing session*
- *Additional Prizes may be awarded at the discretion of Rally Committee*
- **Results will be announced in the Event WhatsApp Group ASAP by 10<sup>th</sup> Feb 2026.**  
**No Prize Giving on 7 Feb 2026. Details of the prize awarding ceremony will be confirmed on a later date.**