

# **2026 COA Clearwater Bay BBQ Rally Saturday to Sunday, 21 – 22 March 2026 Event and Sailing Instructions**

## **1. Entries**

- 1.1. The COA 2026 Clearwater Bay BBQ Rally will be held under PHS and is open to all boats holding a PHS Rating.

## **2. Schedule of the Rally**

- 2.1. The COA 2026 Clearwater Bay BBQ Rally is from Saturday, 21 March 2026 to Sunday, 22 March 2026 with the following run down:

Day One (21 March 2026) at 12:00:00 - Rally starts from Shek O Start Line and will finish at Steep Island Finish Line just outside Clearwater Bay Golf & Country Club Marina (please refer to details in Sections 6, 8 and 9 below);

Day One (21 March 2026) at about 17:30:00 - BBQ Dinner Party at Clearwater Bay Golf & Country Club Marina. BBQ dinner to be served until around 21:00:00 with after dinner drinks (cost of drinks not included) and gathering thereafter; and

Day Two (22 March 2026) - Boats are free to depart from Clearwater Bay Golf & Country Club Marina any time before 14:00:00.

- 2.2. The Rally will start from Shek O at GPS Time 12:00:00 on 21 March 2026. Please plan your cruising time from your mooring to meet the start time.

## **3. Classes and Divisions in the Rally**

- 3.1. This Clearwater Bay BBQ Rally will be held under the PHS system.
- 3.2. Boats entering the Rally with family members on board can enter the addition Family Class. A separate photo must be taken and sent to the race whatsapp chat group before the start of race on 21 March 2026.

## **4. Notices to Participants**

- 4.1. Notices to Participants will be emailed to skippers or announced in the Clearwater Bay BBQ Rally WhatsApp Group to be created by the COA Administrator.
- 4.2. A Clearwater Bay BBQ Rally WhatsApp Group for the event will be set up after the entry deadline for information announcements, communications, declaration and photo sharing.
- 4.3. Information delivered to this Clearwater Bay BBQ Rally WhatsApp Group is deemed to have been announced to and received by all participating boats.

This amends RRS 25 and is not subject to protest.

- 4.4. Boats are recommended to nominate two WhatsApp phone numbers, one of which from the Skipper and/or Owner in order to minimize the chance of missing messages.

## **5. Changes to Event Instructions**

- 5.1. Any change to the Sailing Instructions, the schedule of the Rally or special arrangements will be posted to the Clearwater Bay BBQ Rally WhatsApp group by 21:00:00, 20 March 2026.

## **6. The Course**

- 6.1. Boats will sail a course of approximately 16.0 nautical miles.
- 6.2. Sail Course is shown below in the detailed Course Map and Information section.
- 6.3. After finishing the Rally, boats can freely return to their bases or continue cruising to moor at Clearwater Bay Golf & Country Club Marina (for those that have reserved a mooring there).

**Course, Cut-Off Provisions and Time Limits Remarks:**

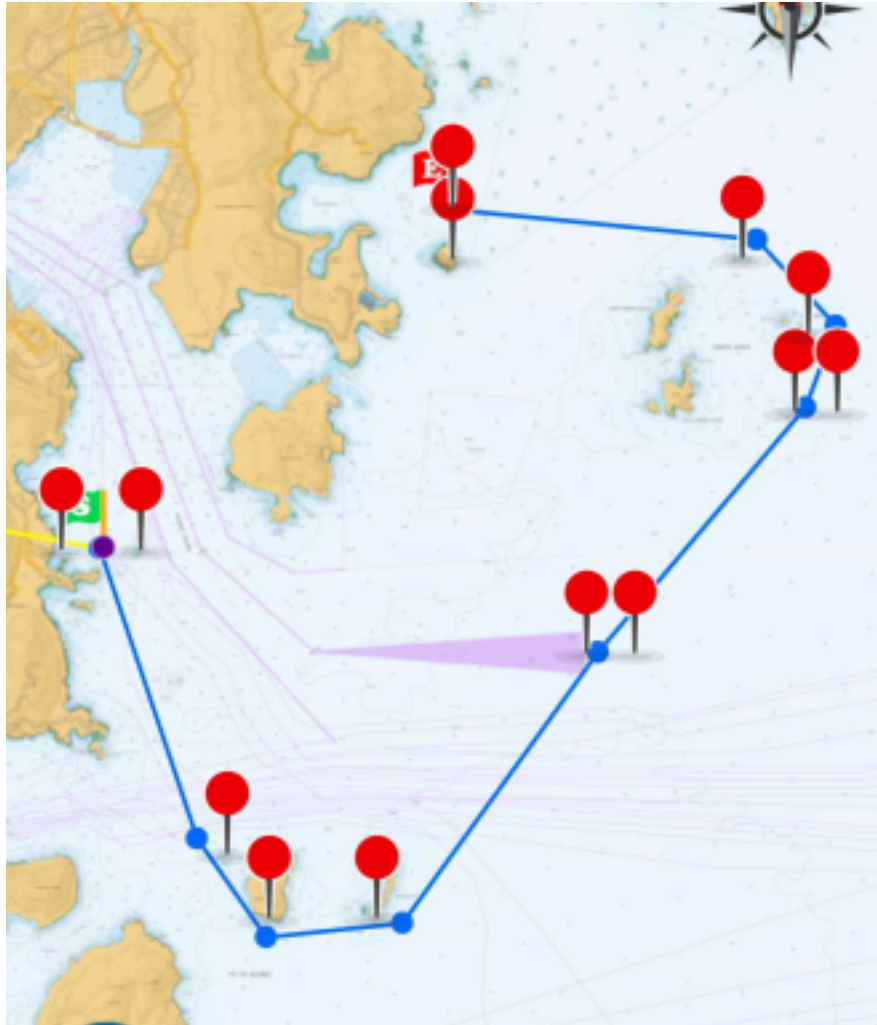
<b>Course Marks, Gates and Lines</b>		<b>Start Time / Leading Boat Cut-Off Time</b>
Start Line	- A Virtual Start Line at Latitude 22°14.040'N between Shek O Rock Light to port and Hong Kong Island to starboard - Boats to pass the virtual Start Line from North to South	All boats to start at 12:00:00
Mark 1	Fury Rocks (Port)	
Mark 2	Sung Kong (Port)	
Mark 3	Waglan Island (Port)	
Gate 1	Between TCS1 at Latitude 22°13.140'N and Longitude 114°20.150'E to port, and Latitude 22°13.150'N and Longitude 114°20.600'E to starboard - Boats to pass Gate 1 from South to North	If the leading boat cannot reach Gate 1 by 15:00:00, the Rally will be cut short and finish at Gate 1
Gate 2	- Between One Foot Rock at Latitude 22°15.230'N and Longitude 114°22.100'E to port, and Latitude 22°15.230'N and Longitude 114°22.500'E to starboard. - Boats to pass Gate 2 from South to North	If the leading boat cannot reach Gate 2 by 16:00:00, the Rally will be cut short and finish at Gate 2
Mark 4	Tuen Chau Tsai (Port)	
Mark 5	Wang Pai (Port)	
Finish Line	A Virtual Finish Line at Steep Island at Longitude 114°18.900'E to port, and Latitude 22°17.000'N and Longitude 114°18.900'E to starboard - Boats to pass the Virtual Finish Line from East to West	

- Activate phone App eStela and start to record the boat's track record at 11:45:00 at the Start Line.
- Time Limit for Leading Boat at Gate 1 is 15:00:00 and Gate 2 is 16:00:00.
- If the Leading Boat does not pass Gate 1 by 15:00:00, the race will be cut short at Gate 1 for all boats.
- If the Leading Boat does not pass Gate 2 by 16:00:00, the race will be cut short at Gate 2 for all boats.
- In the event of a cut short race at Gate 1, the time record in eStela for all boats passing Gate 1 will be used as their Finish Time. If cut short at Gate 2, the time record in eStela for all boats passing Gate 2 will be used as their Finish time.
- Stop your eStela track recording after crossing the Finish Line.

## Route Map of Rally Course

Course: Start: Shek O Rock (P) > Mark 1: Fury Rocks (P) > Mark 2: Sung Kong (P) > Mark 3: Waglan Island (P) > (Gate 1) TCS1 (P) > (Gate 2) One Foot Rock (P) > Mark 4: Tuen Chau Tsai (P) > Mark 5: Wang Pai (P) > (Finish) Steep Island (P).

**Chart is for reference only and not to be used for navigation.**



## 7. Committee Boat, Start Lines, Course Marks and Finish Lines

- 7.1. There will be no committee boat for The Clearwater Bay BBQ Rally. Race Officer, Simon Cheung (+852 9481 9659) in his boat "Fairmile" will be designated as the communication station for the Rally and any announcement will be made in the Clearwater Bay BBQ Rally WhatsApp Group during the Rally.
- 7.2. There will be no physical mark or buoy in this Rally. Start Line, Course Marks, Gates and Finish Line will be by way of using virtual lines and GPS Waypoints, given GPS Latitude and Longitude, and specified distance limits to charted landmarks or navigation buoys or lights. This changes RRS 28 and is not subject to protest.
- 7.3. Boats need to round, pass, cross lines, land or navigation marks specified in the Course as per Section 6 to complete the Rally. Failing to fulfill such requirements will be scored Did Not Finish ("DNF") without a hearing and is not subject to protest.
- 7.4. The GPS Coordinates given in this Event Instructions are referring to GPS Datum WGS84.
- 7.5. Participants please refer details in The RRS Appendix WP (Rules for Racing Around Waypoints).

## 8. The Start

- 8.1. The Start Line for The Clearwater Bay BBQ Rally is as follows:  
**A Virtual Start Line at Latitude 22°14.040'N** between Shek O Rock Light to port and Hong Kong Island to starboard.
- 8.2. The Start Line is NOT manned by a committee boat and each boat shall start their Rally at GPS Time 12:00:00. Penalties will be given to boats starting early.
- 8.3. All boats shall start the phone App "eStela" sailing track recording function at 11:45:00 (Please arrange at least two phones to record your sailing track record).
- 8.4. Boats' GPS time record in their "eStela" track record as they crossed the Start Line will be used as their starting proof. This changes RRS 29 and is not subject to protest.

## 9. The Finish

- 9.1. The virtual Finish Line for The Clearwater Bay BBQ Rally is as follows: **A Virtual Finish Line between** Steep Island at Longitude 114°18.900'E to port, and Latitude 22°17.000'N and Longitude 114°18.900'E to starboard. Boats are to finish in an east to west direction.
- 9.2. Boats should stop their "eStela" sailing track recording after they pass the Finish Line.
- 9.3. The app eStela will upload the collected GPS data continuously or if connection is lost automatically once connection to a mobile phone network is reestablished (Also see Section 14).

## **10. Time Limits, Target Times and Cut Short Provisions**

- 10.1. Any boat that cannot cross the Steep Island Finish Line by GPS time 17:00:00 will be scored DNF.
- 10.2. In the event of unexpected conditions and the leading boat cannot cross Gate 1 by 15:00:00 or Gate 2 by 16:00:00, the cut short provision of the Rally will be at Gate 1 or Gate 2. All boats will then record their finish time at Gate 1 or Gate 2.
- 10.3. There will be NO Motoring Division in The Clearwater Bay BBQ Rally. Any boat electing to motor at any time (except motoring in emergency for safety reasons) are deemed to have retired from The Clearwater Bay BBQ Rally and will be scored DNF.

## **11. Retirals**

- 11.1. Each boat shall as far as practicable call to advise if it wishes to retire. This shall be done by posting a message to the Clearwater Bay BBQ Rally WhatsApp Group as soon as possible.

## **12. Declarations**

- 12.1. Declarations for the Clearwater Bay BBQ Rally will be in the format of the boats' Rally Track Records recorded by the free phone app "eStela" after finishing the Rally and when the race data is uploaded.
- 12.2. Boat owners and/or skippers are required to download and install the free phone app "eStela" to a phone, the boat owner will receive a unique access code to log onto the "eStela" system ahead of the race. Please make sure to be familiar with the operations of the "eStela" App before the Rally.
- 12.3. Boats are required to activate "eStela" to record their Rally tracks from 11:45:00 at the Start Line and keep recording until reaching the Finish Line or at the cut off provision at Gate 1 or Gate 2.
- 12.4. Please ensure to use at least one to record the eStela Track Records, upload all track records to the eStela System after finishing the Rally.
- 12.5. The time and position records of the boats for the Rally as recorded in the "eStela" will be used to calculate the results for the boats.
- 12.6. Boats that have finished or retired from the Rally must send a message to the Clearwater Bay BBQ Rally WhatsApp Group within 30 minutes of such an event for safety notice.

## **13. Protest & Request for Redress**

- 13.1. Protest is not encouraged in COA events unless the boats are involved in a collision and damaged.
- 13.2. Boats can report any irregularity events or items to The Clearwater Bay BBQ Rally WhatsApp Group for the Rally Committee to follow up.

## **14. Scoring**

- 14.1. Scoring for Boats will be calculated using their PHS corrected time from the Start Line at Shek O Rock from North to South until the Finish Line at Steep Island from East to West.

## **15. Tropical Cyclone Warning Signals and Other Severe Weather Conditions**

- 15.1. The Rally Committee will not start the Rally if tropical cyclone warning signal number 3 or higher is issued or is likely to be issued.
- 15.2. The Rally Committee will have the discretion to postpone or cancel the race in the event of low visibility, extraordinary wind conditions, thunderstorm signal, typhoon signal and any other unexpected weather condition.

## **16. Safety**

- 16.1. Boats are reminded to note and observe the requirements of the Fundamental Rules in Part 1 of the RRS particularly in respect of safety and decision to Rally including the requirement to have all Cat 4 equipment in working order.
- 16.2. The rule about not having an anchor outside the sheer line is waived.
- 16.3. A boat may use motor if necessary in order to keep clear of hazards when required. This or any other necessary motoring for safety reasons must be declared but will not result in disqualification or constitute retiring. A time penalty may be applied if an advantage is gained but this will be at the discretion of the Rally Committee.

## **17. Self-Steering and Powered Devices**

- 17.1. The use of electronic, mechanical and wind-vane devices for steering are only allowed on single or double handed boats.

## **18. Radio Communications**

- 18.1. There will be no official communication via VHF but boats are recommended to monitor VHF Channel 12 and 72.
- 18.2. Communications during the Rally will be via the Clearwater Bay BBQ Rally WhatsApp Group.

## **19. Results and Prizes**

- 19.1. Prizes will be awarded to the First three finishing boats as per the PHS corrected time in the Rally.
- 19.2. Additional prizes may be awarded at the discretion of the Rally Committee.

## **20. Disclaimer of Liability**

20.1. Participants have entered this Rally entirely at their own risk. Please refer to RRS Rule 4, Decision to Rally. The Organizing Committee nor COA will accept any liability for material damage, personal injury or death sustained in conjunction with, prior to, during or after the Clearwater Bay BBQ Rally.

## **21. Insurance**

21.1. All boats shall be insured with valid third-party liability insurance of the minimum cover required by HKSAR Law (Mardept Notice 71-2021). All entrants are reminded that cover must include all waters traversed during the Clearwater Bay BBQ Rally. The Rally Committee reserves the right to inspect each boat's insurance certificate, if necessary.

## **22. Right to use Name and Likeness**

22.1. By participating in this event, participants grant to the organizing authority and the event sponsors (if any) the right in perpetuity to make, use and show at their discretion any photography, audio and video recordings and other reproductions made of them without compensation.